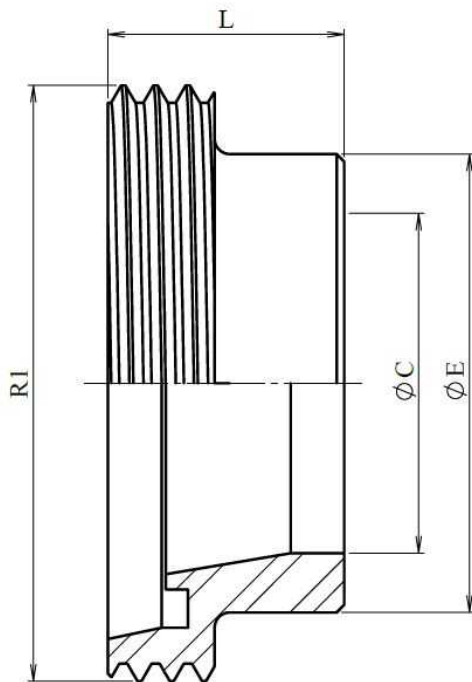


Machos soldables DIN 11851

Acero Inoxidable AISI 316-L



Artículo	DN	R1	ØC	ØE	L
ZDIN M 16	16	34x1/8"	16	21	21
ZDIN M 20	20	44x1/6"	20	25	24
ZDIN M 25	25	52x1/6"	26	31	29
ZDIN M 32	32	58x1/6"	32	37	32
ZDIN M 40	40	65x1/6"	38	43	33
ZDIN M 50	50	78x1/6"	50	55	35
ZDIN M 65	65	95x1/6"	66	72	40
ZDIN M 80	75/80	110x1/4"	81	87	45
ZDIN M 100	100	130x1/4"	100	106	54