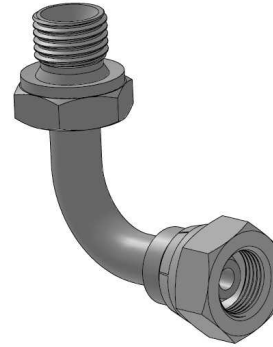
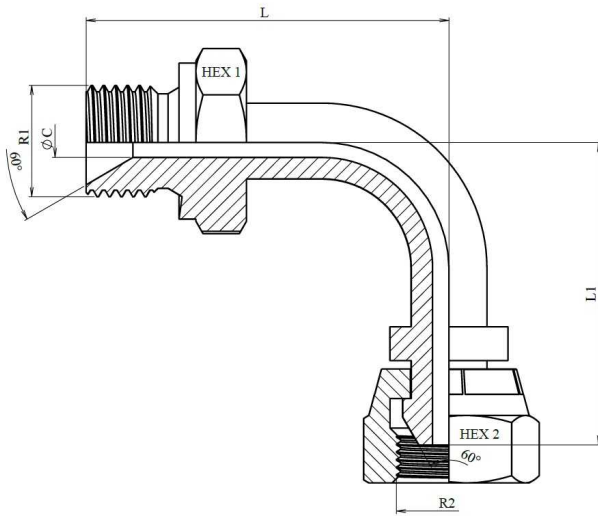


90° Winkel AGR-DKR

Edelstahl AISI 316-L



Artikel	R1	R2	L	L1	HEX 1	HEX 2	ØC
Z119404	1/4" BSP	1/4" BSP	43	36	19	19	4
Z119406	3/8" BSP	3/8" BSP	50	42	22	22	7
Z119408	1/2" BSP	1/2" BSP	60	51	27	27	9,5
Z119412	3/4" BSP	3/4" BSP	76	70	32	32	15
Z119416	1" BSP	1" BSP	93	71	41	41	19
Z119420	1"1/4 BSP	1"1/4 BSP	98	85	50	50	25
Z119424	1"1/2 BSP	1"1/2 BSP	114	106	55	55	32
Z119432	2" BSP	2" BSP	138	121	70	70	44