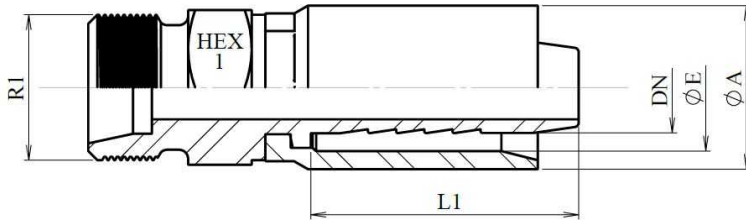


One piece Metric male 24° cone

Stainless Steel AISI 316-L



Part nº	DN	ØD1	Serie	R1	Details	L1	HEX 1	ØA	ØE
86203140804	1/4"	8	L	M14x1.5	84203140804 + 880400400	27,8	17	15	11
86203181206	3/8"	12	L	M18x1.5	84203181206 + 880400600	27,3	22	18	14
86203221508	1/2"	15	L	M22x1.5	84203221508 + 880400800	29,3	27	24	19,3
86203302212	3/4"	22	L	M30x2	84203302212 + 880401200	36,2	36	30	24,9
86203362816	1"	28	L	M36x2	84203362816 + 880401600	46,3	41	36	30,3
86203160804	1/4"	8	S	M16x1.5	84203160804 + 880400400	27,8	19	15	11
86203201206	3/8"	12	S	M20x1.5	84203201206 + 880400600	27,3	24	18	14
86203241608	1/2"	16	S	M24x1.5	84203241608 + 880400800	29,3	30	24	19,3
86203362512	3/4"	25	S	M36x2	84203362512 + 880401200	36,2	46	30	24,9
86203423016	1"	30	S	M42x2	84203423016 + 880401600	46,3	50	36	30,3

Sizes 3/16" 1/4 "3/8" 1/2 " : smooth inner profile ferrule
 Sizes 3/4 "1" : internal serrated profile ferrule