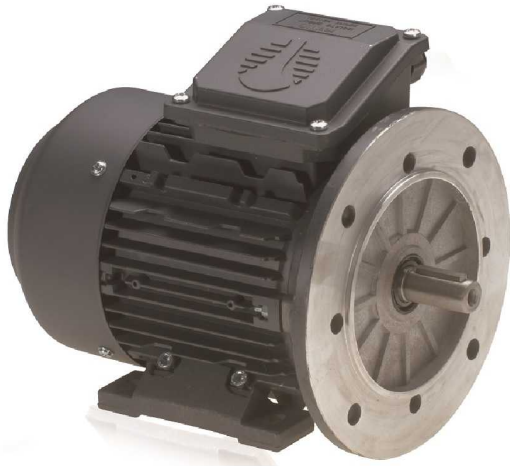


Electric motors

Electric motors standard torque single-phase (220/50-1500rpm-4p)

Electric motors standard torque single-phase with flange and legs (B3B5)



Part n°	Voltage (V)	Shaft	Flange diam.	R.P.M.	POWER (HP)
MEMBP0.75B3B5	230	19mm	200	1500	0,75
MEMBP1B3B5	230	19mm	200	1500	1