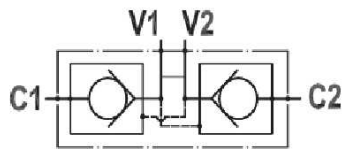
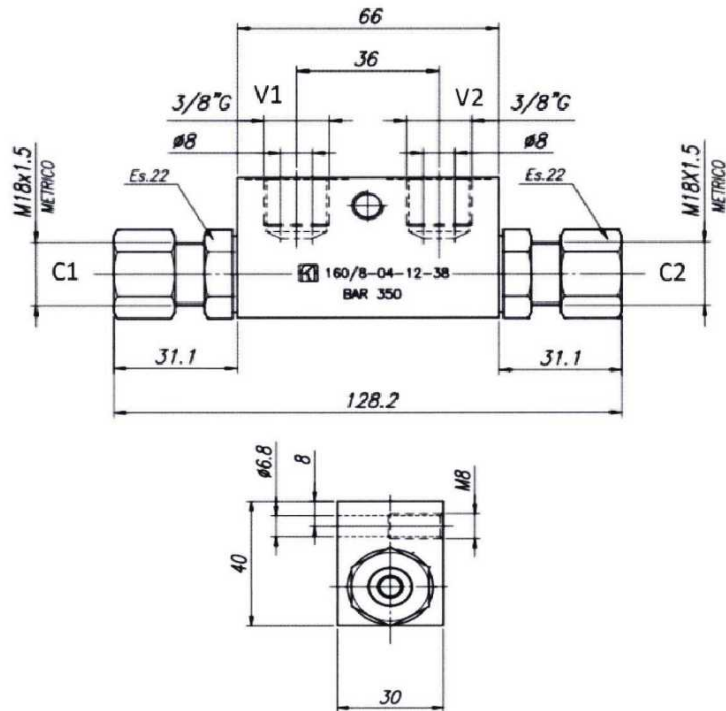


**Block with double pilot-operated check valve and ball valves**



**Material** Zinc Plated Steel Body

**Cracking Pressure** 3 bar

**O-ring** NBR

**Operating temperature** -20 ÷ +100°C

Part n°	C1 - C2	V1 - V2	Max. flow (l/min)	Max. Press. (bar)	Pilot ratio
FT1603812L	12L	3/8"	30	350	1:5,5