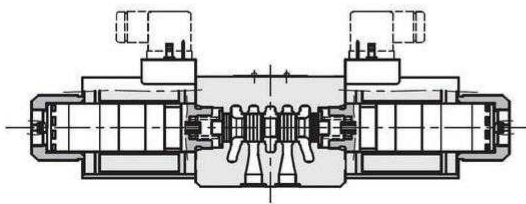
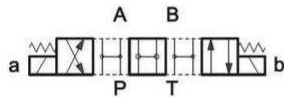
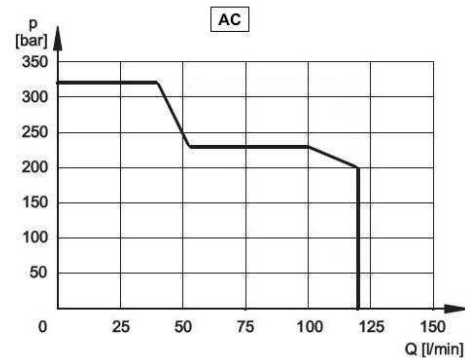
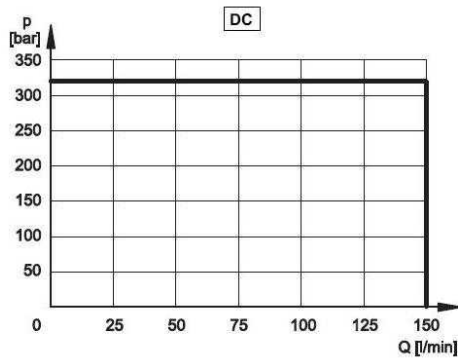
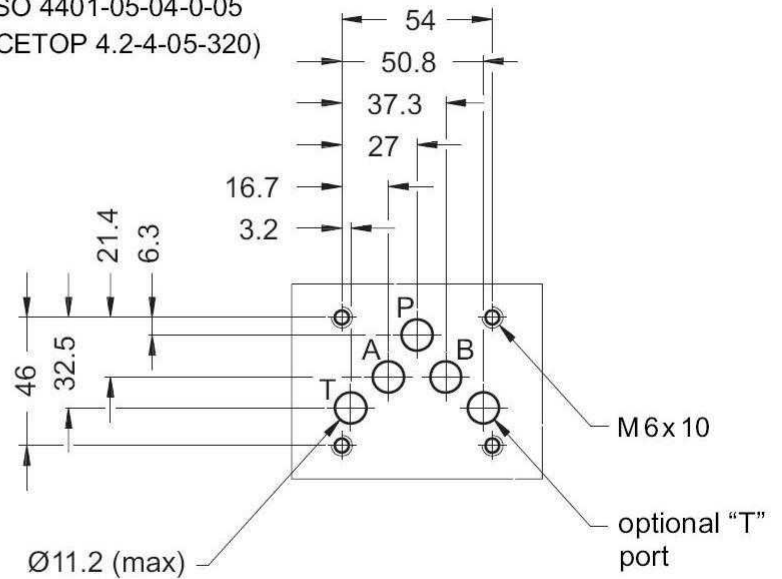


NG10 Solenoid valve - spool S2



ISO 4401-05-04-0-05
(CETOP 4.2-4-05-320)



Max. work pressure: P - A - B ports= 320 bar
T port -Direct Current=210 bar
T port -Alternative Current=140 bar

Part n°	Size	Voltage (V)	Max. flow (l/min)	Max. Press. (bar)	f (Hz)
DS5-S2/11N-A110-50K1	NG-10	110 VAC	120*	320	50/60
DS5-S2/11N-A230-50K1	NG-10	220 VAC	120*	320	50/60
DS5-S2/11N-A24-50K1	NG-10	24 VAC	120*	320	
DS5-S2/11N-A48-50K1	NG-10	48 VAC	120*	320	
DS5-S2/11N-D12K1	NG-10	12 VDC	120*	320	
DS5-S2/11N-D24K1	NG-10	24 VDC	120*	320	
DS5-S2/11N-D48K1	NG-10	48 VDC	120*	320	

*120 lts / 200 bar