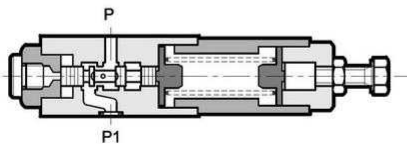
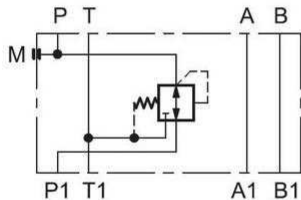
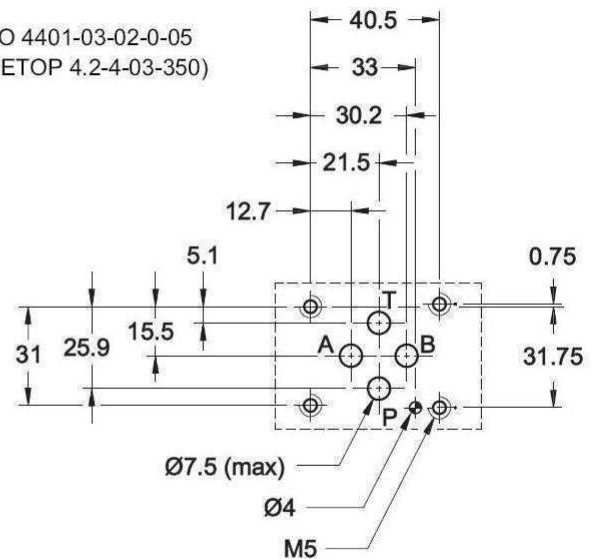


NG6 pressure reducing valve in P

1/1



ISO 4401-03-02-0-05
(CETOP 4.2-4-03-350)



Max. pressure -port T: 10 bar

Max. flow rate in controlled lines: 50 l/min

Max. flow rate in free lines: 75 l/min

Drainage flow rate: <0.08 l/min

Part n°	Size	Max. Press. (bar)	Reg. rate (bar)
MZD2/50	NG-6	350	3 - 35
PZM3-P035/10N/S	NG-6	350	3 - 35
PZM3-P035/10N/S/W7	NG-6	350	3 - 35
PZM3-P070/10N/S	NG-6	350	10 - 70
PZM3-P070/10N/S/W7	NG-6	350	10 - 70
PZM3-P140/10N/S	NG-6	350	30 - 140
PZM3-P140/10N/S/W7	NG-6	350	30 - 140
PZM3-P280/10N/S	NG-6	350	60 - 280
PZM3-P280/10N/S/W7	NG-6	350	60 - 280

W7 zinc plated