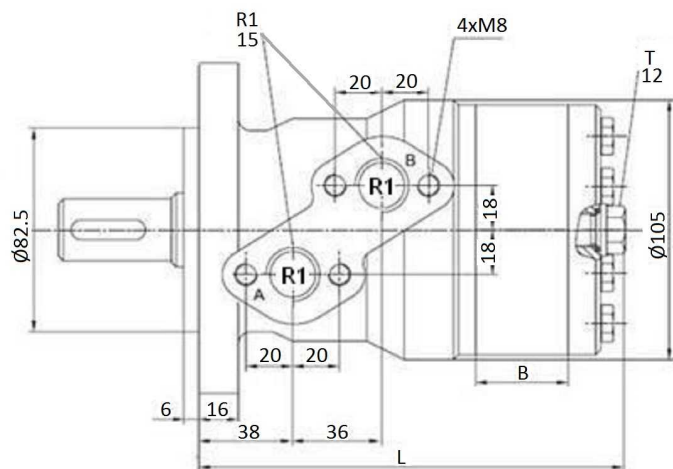
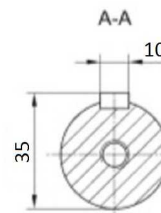
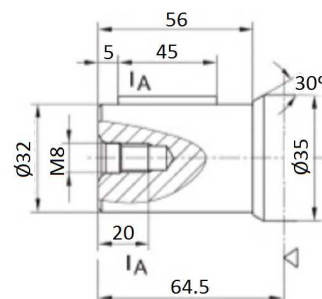
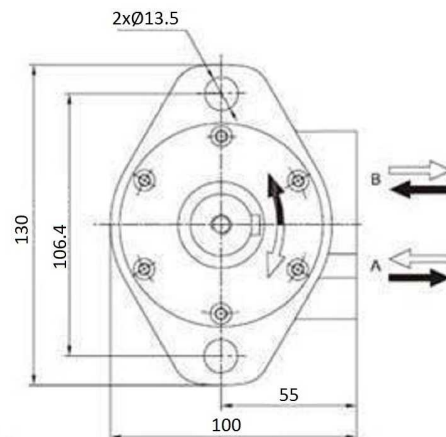
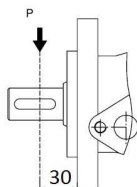
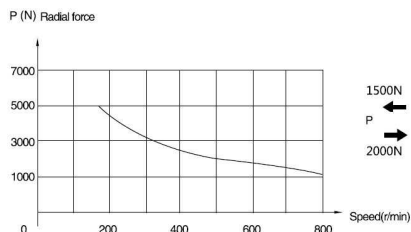


MOMR type motor with 32mm shaft



Shaft: cylindrical shaft, diameter 32 mm

Max. flow interm: MOMR50-32= 50 l/min, Others= 75 l/min

T: drainage line, thread 1/4"

(Power in kW)

(Torque in daN.m)

Part n°	R1	Max. flow (l/min)	Max. press. cont.	Max. press. interm.	Max. Peak press.	cm ³ /rev	R.P.M. cont.	R.P.M. int.	Max. torque cont.	Max. torque peak	Max. power cont.	B	L
MOMR50-32	1/2" BSP	40	140	175	210	50	770	970	10	16,8	6,9	9	139
MOMR80-32	1/2" BSP	60	160	180	210	80	745	940	19,6	27	12,6	14	144
MOMR100-32	1/2" BSP	60	160	180	210	100	600	750	24,2	32,1	12	17,5	148
MOMR125-32	1/2" BSP	60	140	180	200	125	470	600	23	33	12,4	22	152
MOMR160-32	1/2" BSP	60	140	180	200	160	375	600	31	43	12,4	28	152
MOMR200-32	1/2" BSP	60	135	175	210	200	300	370	38,5	56	9	35	165
MOMR250-32	1/2" BSP	60	105	160	200	250	240	300	38,8	65,5	6,4	44	174
MOMR315-32	1/2" BSP	60	85	130	175	315	190	240	38,5	83	6	56	186
MOMR400-32	1/2" BSP	60	65	75	175	400	150	190	35,5	71,3	4,7	70	200

*** Review attached PDF***

*Intermittent operation rating applies to 6 seconds of every minute.

*Peak load rating applies to 0.6 seconds of every minute.