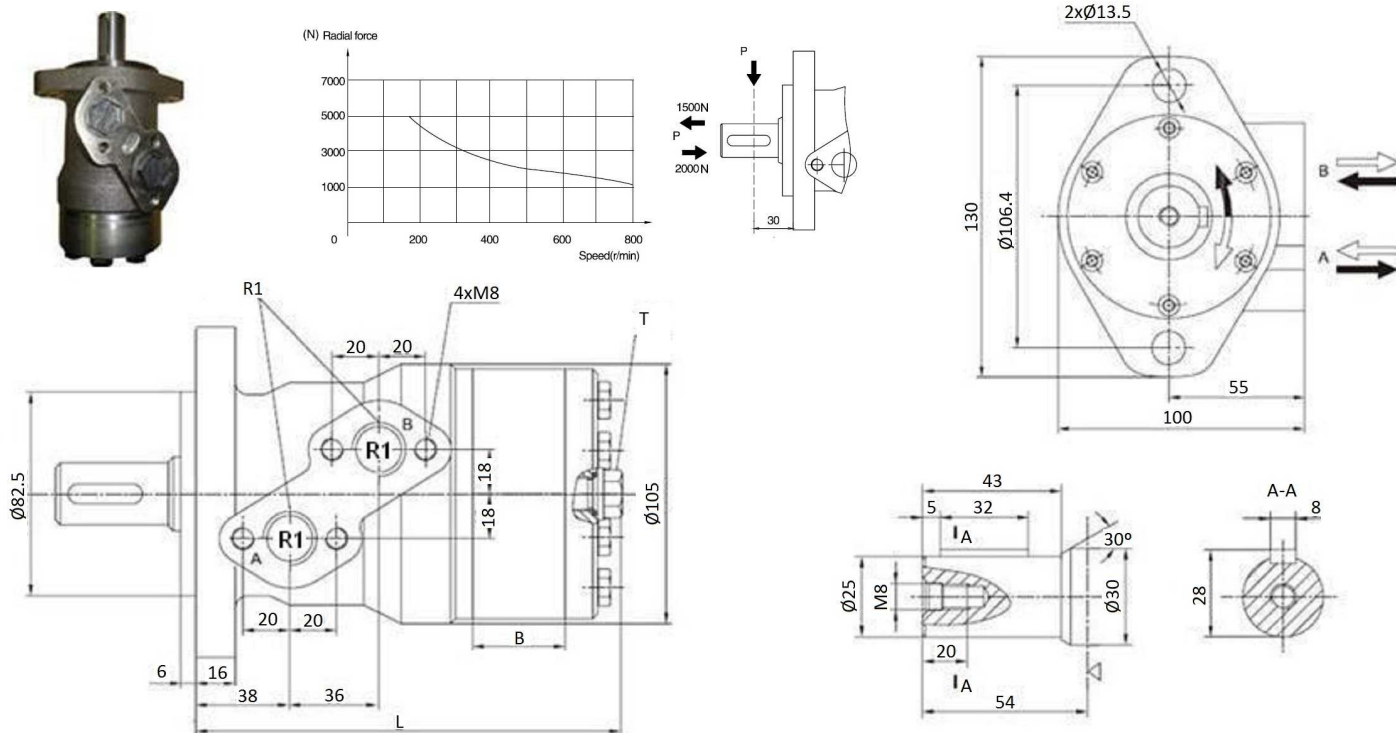


MOMR type motor 25 mm Ø



Shaft: cylindrical shaft, diameter 25 mm

Max. flow intern.: MOMR50 =50 (l/min); Others=75 (l/min)

T: drainage line, thread 1/4"

(Power in kW)

(Torque N.m)

Part n°	R1	Max. flow (l/min)	Max. press. cont.	Max. press. interm.	Max. Peak press.	cm ³ / rev	R.P.M. cont.	R.P.M. int.	Max. torque cont.	Max. torque peak	Max. power cont.	Max. flow cont.	B	L
MOMR40	1/2" BSP	45	100	200	250	40	770	1.000	50	100	6,9	40	9	139
MOMR50	1/2" BSP	50	175	200	225	50	770	970	115	150	7,8	40	9	139
MOMR80	1/2" BSP	75	175	200	225	80	745	940	190	230	12,5	60	14	144
MOMR100	1/2" BSP	75	175	200	225	100	595	750	236	290	12,5	60	17,5	148
MOMR125	1/2" BSP	75	175	200	225	125	475	600	296	360	12,5	60	22	152
MOMR160	1/2" BSP	75	175	200	225	160	370	470	380	475	12,5	60	28	158
MOMR200	1/2" BSP	75	175	200	225	200	295	370	455	570	11,5	60	35	165
MOMR250	1/2" BSP	75	140	160	200	250	235	300	470	655	9,5	60	44	174
MOMR315	1/2" BSP	75	120	140	180	315	185	240	490	750	8	60	56	186
MOMR400	1/2" BSP	75	100	120	160	400	150	190	510	820	6,5	60	70	200

*** Review attached PDF***

*Intermittent operation rating applies to 6 seconds of every minute.

*Peak load rating applies to 0.6 seconds of every minute.