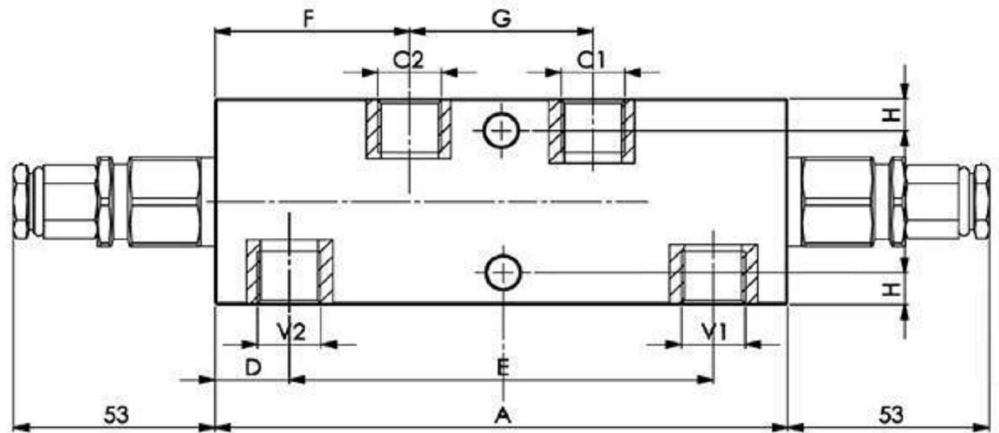
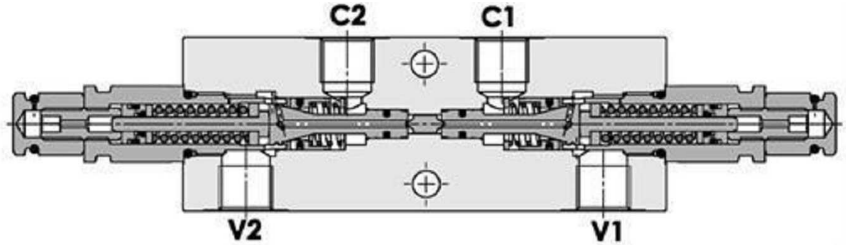
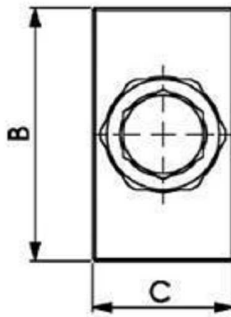
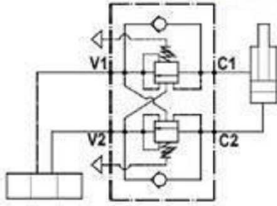


## Lasthalteventil symmetrisch doppelt wirkend (in Linie)



Artikel	R1	Durchfluss Max	Druck max. (bar)	Einstell- Regglie- druck (bar)	Druck- zunahme (bar)	A	B	C	D	E	F	G	H	I	
<b>VT0160063520</b>	3/8" BSP	50	350	170	60 - 210	70	150	55	30	19	112	51	48	8,5	8,5
<b>VT0160063535</b>	3/8" BSP	50	350	280	80 - 350	120	150	55	30	19	112	51	48	8,5	8,5
<b>VT0160085020</b>	1/2" BSP	50	350	280	60 - 210	70	150	65	35	19	112	51	48	11	8,5
<b>VT0160065035</b>	1/2" BSP	50	350	170	80 - 350	120	150	65	35	19	112	51	48	11	8,5

\*\*\* Review attached PDF\*\*\*