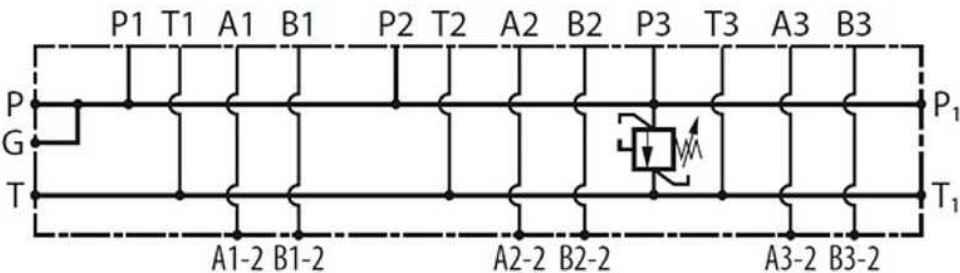


Solenoid valves
Subplates for NG10

Parallel subplate for NG10 directional valves with
relief valve, A & B side ports



Part nº	Size	Nº directional valves	Flow (l/min)
PFNG102PLCL180 H	NG-10	2	120
PFNG103PLCL180 H	NG-10	3	120
PFNG104PLCL180 H	NG-10	4	120
PFNG105PLCL180 H	NG-10	5	120

*** Review attached PDF***
Maximum flow: 120 l/min
Regulation rate: 20-250 bar
Legs included
Max pressure: 315 bar