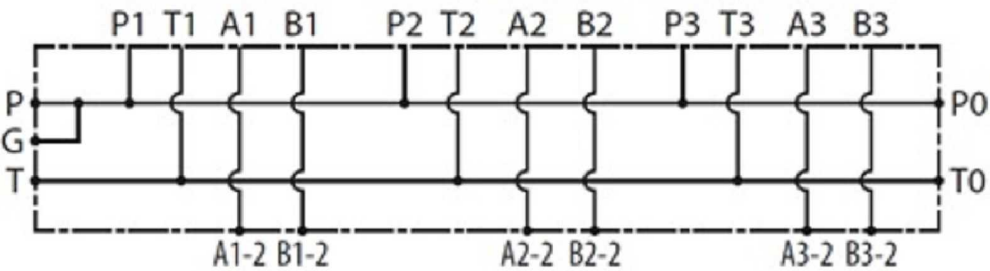


Solenoid valves
Subplates for NG10

Parallel subplate for NG10 directional valve without relief valve, A & B side ports



Forged steel

| Part nº | Size | Nº directional valves | Flow (l/min) |
|-------------|-------|-----------------------|--------------|
| PFNG102PL H | NG-10 | 2 | 120 |
| PFNG103PL H | NG-10 | 3 | 120 |
| PFNG104PL H | NG-10 | 4 | 120 |
| PFNG105PL H | NG-10 | 5 | 120 |

*** Review attached PDF***
Maximum flow: 120 L/min
Legs included
Max pressure: 315 bar