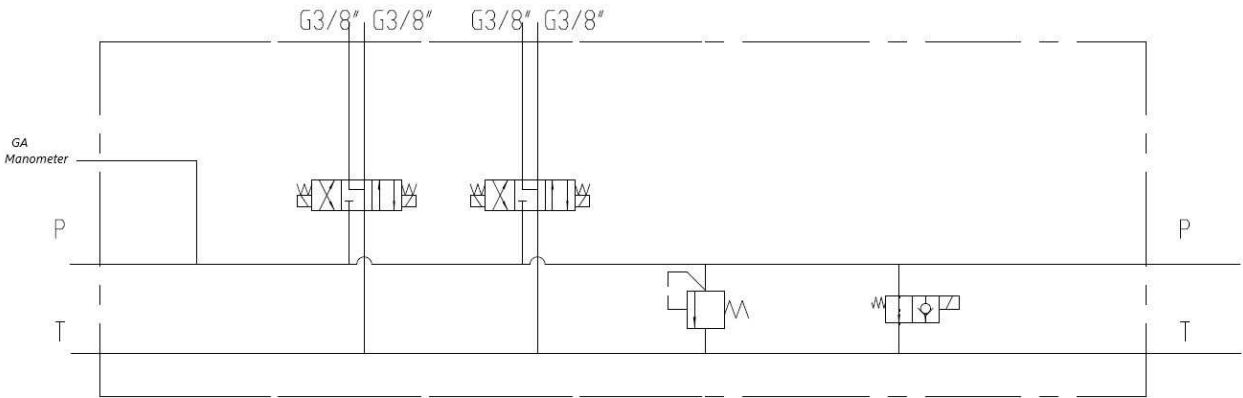


Solenoid valves

Subplates for NG6

Parallel subplate for NG6 direct.valve with relief valve,by pass cavity,ins.valves,A & B side ports



Venting Electric valve: VENA08F + BOF38 (depending of voltage)
Relief valve range: 50-250 Bar
Material: Steel

Part nº	R1	R2	Nº directional valves	Flow (l/min)
PV2PLCL180 H	3/8" BSP	1/2" BSP	2	40
PV3PLCL180 H	3/8" BSP	1/2" BSP	3	40
PV4PLCL180 H	3/8" BSP	1/2" BSP	4	40
PV5PLCL180 H	3/8" BSP	1/2" BSP	5	40
PV6PLCL180 H	3/8" BSP	1/2" BSP	6	40
PV7PLCL180 H	3/8" BSP	1/2" BSP	7	40
PV8PLCL180 H	3/8" BSP	1/2" BSP	8	40
PV9PLCL180 H	3/8" BSP	1/2" BSP	9	40
PV10PLCL180 H	3/8" BSP	1/2" BSP	10	40

*** Review attached PDF***
the vent override plug is MC030 H-TD