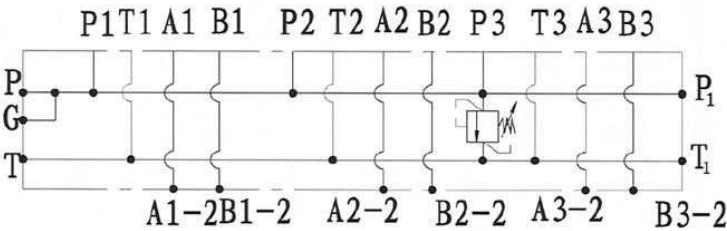


Parallel subplate for NG6 directional valve with relief valve, A & B side ports



Part nº	R1	R2	Nº directional valves	Flow (l/min)
PF2PLCL180 H	1/2" BSP	3/8" BSP	2	40
PF3PLCL180 H	1/2" BSP	3/8" BSP	3	40
PF4PLCL180 H	1/2" BSP	3/8" BSP	4	40
PF5PLCL180 H	1/2" BSP	3/8" BSP	5	40
PF6PLCL180 H	1/2" BSP	3/8" BSP	6	40
PF7PLCL180 H	1/2" BSP	3/8" BSP	7	40
PF8PLCL180 H	1/2" BSP	3/8" BSP	8	40
PF9PLCL180 H	1/2" BSP	3/8" BSP	9	40
PF10PLCL180 H	1/2" BSP	3/8" BSP	10	40

*** Review attached PDF***
Maximum flow: 40 L/min
Regulation rate: 20-250 bar