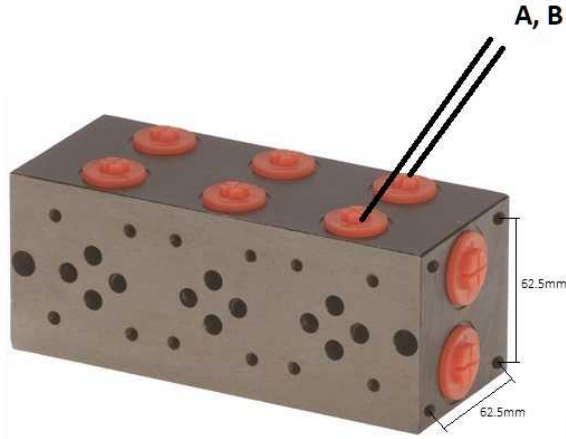


Electroválvulas

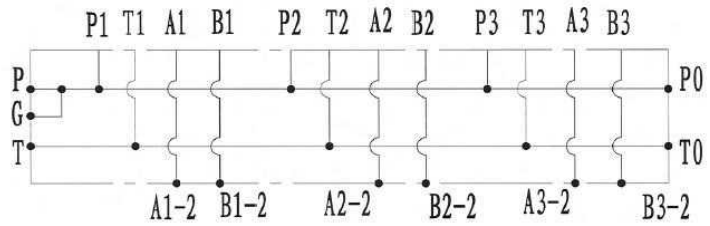
Placas base NG6

## Placa base NG6 montaje en paralelo sin limitadora, salidas A y B laterales

Página: 1/1



P, T = 1/2" BSP



Acero forjado

Artículo	A-B	Nº electroválvulas	Caudal (l/min)
<b>PF2PL H</b>	3/8" BSP	2	40
<b>PF3PL H</b>	3/8" BSP	3	40
<b>PF4PL H</b>	3/8" BSP	4	40
<b>PF5PL H</b>	3/8" BSP	5	40
<b>PF6PL H</b>	3/8" BSP	6	40
<b>PF7PL H</b>	3/8" BSP	7	40
<b>PF8PL H</b>	3/8" BSP	8	40
<b>PF9PL H</b>	3/8" BSP	9	40
<b>PF10PL H</b>	3/8" BSP	10	40

\*\*\* Revisar PDF adjunto \*\*\*  
Caudal máximo: 40 L/min