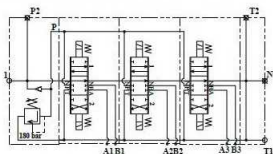


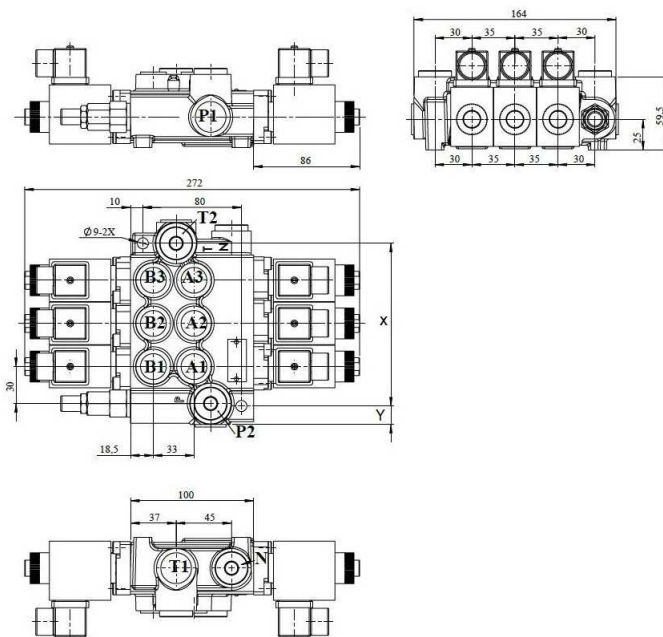
## Distributeur à commande électrique 3/8 BSP, 50 l/min

**1/1**



Nominal flow rate: 50 l/min  
Operating pressures:  
@ port P - 250 bar  
@ port A, B - 300 bar  
@ port T - 50 bar

Port threads:  
Port P - BSP G 1/2"  
Port A, B - BSP G 3/8"  
Port T - BSP G 1/2"  
Port N - BSP G 1/2"



Référence	R1	Débit max. (l/min)	Press. max. (bar)	N° leviers	Tension	X	Y
<b>YFME50/1 3/8 1P DE</b>	3/8" BSP	50	250	1	12 VDC	93	17
<b>YFME50/2 3/8 2P DD</b>	3/8" BSP	50	250	2	12 VDC	97	15
<b>YFME50/3 3/8 3P DDD</b>	3/8" BSP	50	250	3	12 VDC	132	15