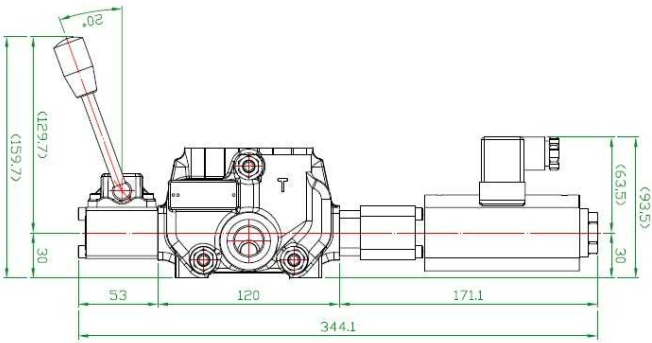


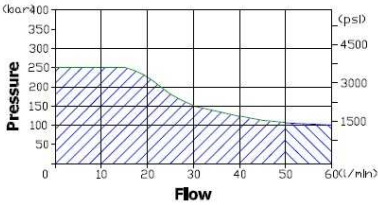
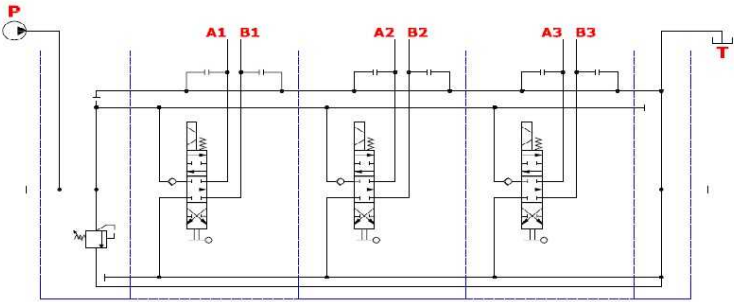
Control valves

Electrical control valve

**Central Distributor Body YEMC50**



Nominal flow rating 流量		50 L/min	13 US gpm
Operating pressure (Max.) 使用壓力(最大)		315 bar	4600 psi
Back pressure (Max.) 背壓(最大)	on outlet port T 回油口T	25 bar	360 psi
Fluid temperature 流體溫度	with NBR seals O環(NBR)	-20°C ~ 80°C	-4°F ~ 176°F
	with FPM seals O環(FPM)	-20°C ~ 100°C	-4°F ~ 212°F
Viscosity 黏度係數	Operating range 建議使用範圍	15mm <sup>2</sup> /s ~ 75mm <sup>2</sup> /s	15 ~ 75 cst
	Max. 最大	400mm <sup>2</sup> /s	400 cst
	Min. 最小	12mm <sup>2</sup> /s	12 cst
Ambient temperature 環境溫度範圍		-40°C ~ 60°C	-40°F ~ 140°F



Part n°	Details
YEMC50DE12DC-ND	12 VDC
YEMC50M12DC-ND	12 VDC
YEMC50DE24DC-ND	24 VDC
YEMC50M24DC-ND	24 VDC
YEMC50DE12DC	12 VDC
YEMC50M12DC	12 VDC
YEMC50DE24DC	24 VDC
YEMC50M24DC	24 VDC