

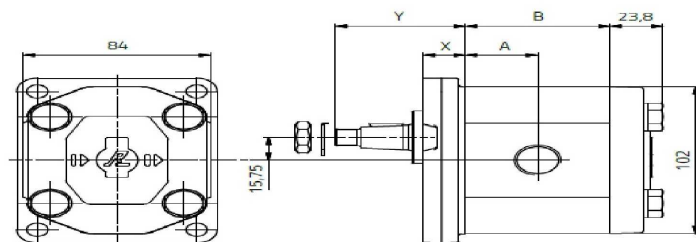
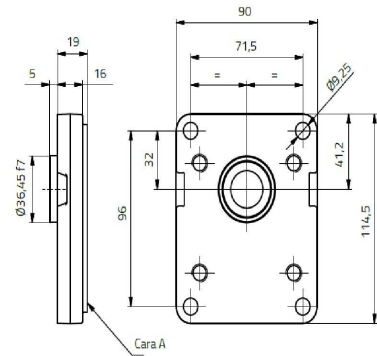
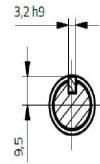
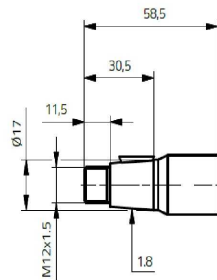
Gr. II Pompa Ingranaggi/Flangia 10/Albero tipo E/Attacchi B

1/1



Cónico europeo 1:8

Máx. par de arrastre 160 Nm

[illegible]

Tomas B	1 sentido de rotación					
	Aspiración			Presión		
	C	D	E	C	D	E
4 ... 6	13,5	30	M6	13,5	30	M6
8 ... 12	20	40	M8	15	30	M6
15 ... 26,7	20	40	M8	15	30	M6

Codice	Ø ASPIRATION (mm)	Ø PRESSURE (mm)	Portata (l/min)	Press. max.	Press. picco (bar)	Giri/ minuto	cm³/ giro
1L12DE10B	40	30	12 L/min *	275	300	1500	8
1L35DE10B	40	30	35 L/min*	175	190	1500	23,3
1G6CDE10B	30	30	9 L/min	275	310	1500	6
1G8CDE10B	40	30	12 L/min	275	310	1500	8
1G11CDE10B	40	30	16 L/min	275	310	1500	10.7
1G15CDE10B	40	30	22 L/min	250	285	1500	14.7
1G18CDE10B	40	30	27 L/min	225	260	1500	18
1G23CDE10B	40	30	35 L/min	180	210	1500	23,3

Recensione PDF allegato

* Fino ad esaurimento scorte