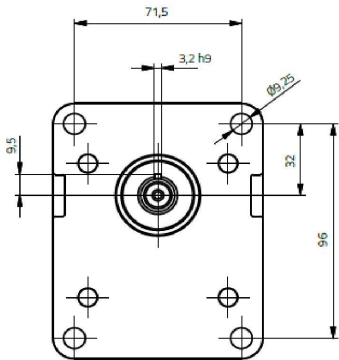
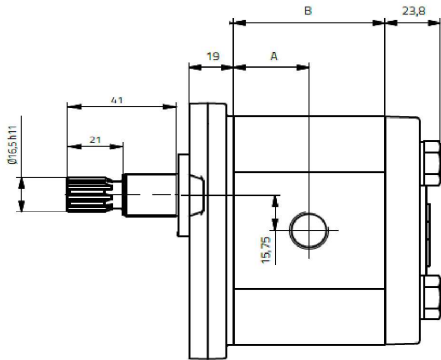


Gr. II Pompa Ingranaggi/Flangia 10/Albero tipo  
T/Attacchi R

1/1



| Codice     | R1       | R2       | Portata<br>(l/min) | Press.<br>max. | Press.<br>picco<br>(bar) | Giri/<br>minuto | cm <sup>3</sup> / giro |
|------------|----------|----------|--------------------|----------------|--------------------------|-----------------|------------------------|
| 1G6CDT10R  | 1/2" BSP | 3/8" BSP | 9 L/min            | 275            | 310                      | 1500            | 6                      |
| 1G8CDT10R  | 1/2" BSP | 3/8" BSP | 12 L/min           | 275            | 310                      | 1500            | 8                      |
| 1G11CDT10R | 1/2" BSP | 3/8" BSP | 16 L/min           | 275            | 310                      | 1500            | 10.7                   |
| 1G15CDT10R | 1/2" BSP | 3/8" BSP | 22 L/min           | 250            | 285                      | 1500            | 14.7                   |
| 1G18CDT10R | 3/4" BSP | 1/2" BSP | 27 L/min           | 225            | 260                      | 1500            | 18                     |
| 1G23CDT10R | 3/4" BSP | 1/2" BSP | 35 L/min           | 180            | 210                      | 1500            | 23                     |

\*\*\*Recensione PDF allegato\*\*\*