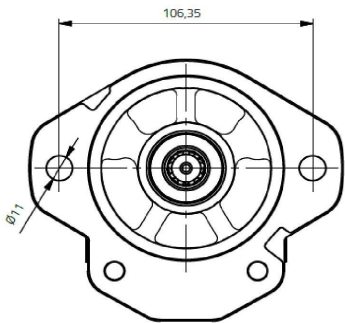
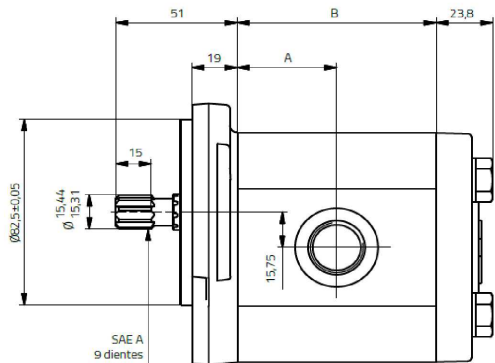


Gr. II Pompa Ingranaggi/Flangia 09/Albero tipo  
G/Attacchi R



Codice	R1	R2	Portata (l/min)	Press. max.	Press. picco (bar)	Giri/ minuto	cm <sup>3</sup> / giro
1G6CDG09R	1/2" BSP	3/8" BSP	9 l/min	275	310	1500	6
1G8CDG09R	1/2" BSP	3/8" BSP	12 l/min	275	310	1500	8
1G11CDG09R	1/2" BSP	3/8" BSP	16 l/min	275	310	1500	10.7
1G15CDG09R	1/2" BSP	3/8" BSP	22 l/min	250	285	1500	14.7
1G18CDG09R	3/4" BSP	1/2" BSP	27 l/min	225	235	1500	18
1G23CDG09R	3/4" BSP	1/2" BSP	35 l/min	200	210	1500	23