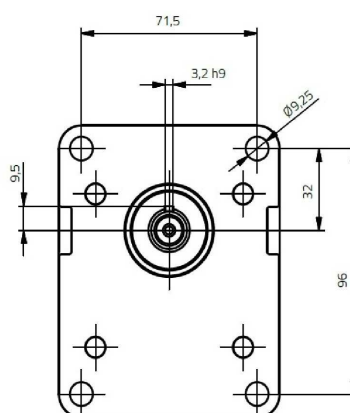
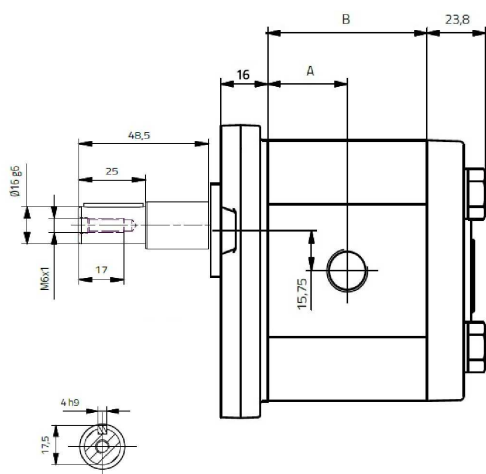


Gr. II Pompa Ingranaggi/Flangia 31/Albero tipo C/Attacchi R

1/1



Codice	R1	R2	Portata (l/min)	Press. max.	Press. picco (bar)	Giri/ minuto	cm ³ / giro
1G6CDC31R	1/2" BSP	3/8" BSP	9 L/min	275	310	3500	6
1G8CDC31R	1/2" BSP	3/8" BSP	12 L/min	275	310	3500	8
1G11CDC31R	1/2" BSP	3/8" BSP	16 L/min	275	310	3000	10.7
1G15CDC31R	1/2" BSP	3/8" BSP	22 L/min	250	285	2500	14.7
1G18CDC31R	3/4" BSP	1/2" BSP	27 L/min	225	260	2300	18
1G23CDC31R	3/4" BSP	1/2" BSP	35 L/min	180	210	2000	23.3

Recensione PDF allegato