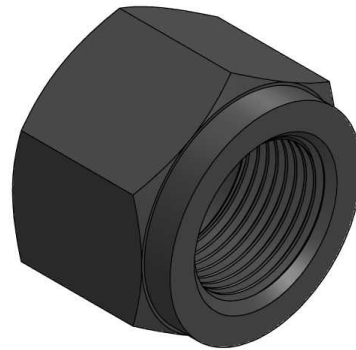
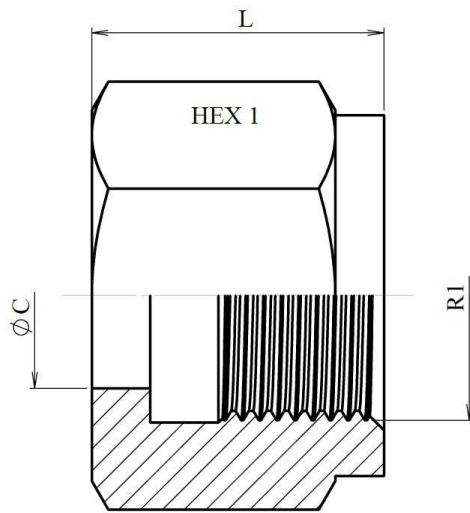


**Tuerca para cono ajuste 60° BSP**

Acero Carbono

1/1



Artículo	R1	L	HEX 1	ØC
<b>A127004</b>	1/4" BSP	15	19	9,5
<b>A127006</b>	3/8" BSP	16	22	12,5
<b>A127008</b>	1/2" BSP	19	27	16,5
<b>A127012</b>	3/4" BSP	21	32	21,5
<b>A127016</b>	1" BSP	26	41	27,5
<b>A127020</b>	1"1/4 BSP	26	50	33,5
<b>A127024</b>	1"1/2 BSP	27	55	42
<b>A127032</b>	2" BSP	31	65	53

Tratamiento superficial: Pavonado