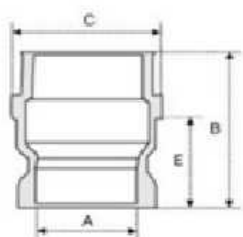


Raccordi CAMLOCK DIN EN 14420-7

Raccordi CAMLOCK polipropilene

Tipo F polipropilene: Camlock maschio - filetto maschio BSPT

Pagina: 1/1



Normativa: EN 14420-7 / DIN 2828

PN: 1/2" - 4" 150 PSI ----- 5" - 6" 75 PSI

Codice	DN	R1	A	B	C	E
PPF012	12	1/2"	21	58	24	39
PPF020	20	3/4"	21	58	34	39
PPF025	25	1"	24	66	41	46
PPF032	32	1"1/4	29	81	48	57
PPF040	40	1"1/2	34	78	58	54
PPF050	50	2"	45	90	70	62
PPF065	65	2"1/2	59	92	80	63
PPF080	80	3"	74	98	100	67
PPF100	100	4"	93	108	110	74

Temperatura di lavoro 80°C