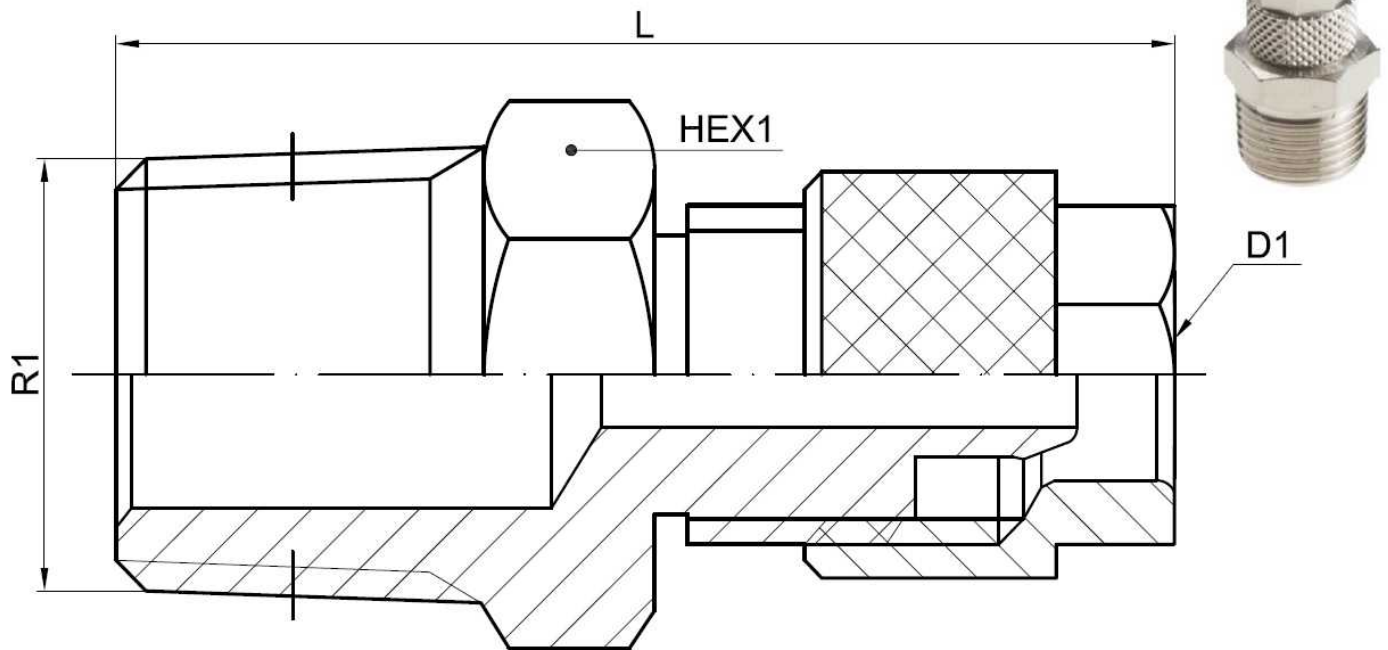


Push-on-M BSPT tapered



MATERIAL: BRASS NICKEL PLATED

ØD1: ØEXT/ØINT PIPE

Part n°	ØD1	R1	L	HEX 1
1000 4/2.7 1/8	4/2.7 mm	1/8"	23	12
1000 6/4 1/8	6/4 mm	1/8"	25,6	12
1000 6/4 1/4	6/4 mm	1/4"	29,6	14
1000 6/4 3/8	6/4 mm	3/8"	30	17
1000 8/6 1/8	8/6 mm	1/8"	26,9	14
1000 8/6 1/4	8/6 mm	1/4"	30,9	14
1000 8/6 3/8	8/6 mm	3/8"	31,4	17
1000 8/6 1/2	8/6 mm	1/2"	34	22
1000 10/8 1/4	10/8 mm	1/4"	33	14
1000 10/8 3/8	10/8 mm	3/8"	33,5	17
1000 10/8 1/2	10/8 mm	1/2"	36,5	22
1000 12/10 3/8	12/10 mm	3/8"	35	17
1000 12/10 1/2	12/10 mm	1/2"	38	22