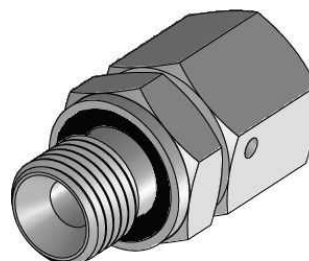
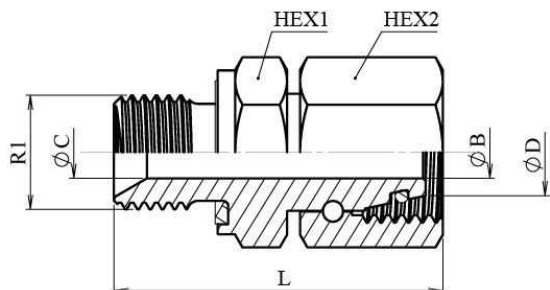


Tubo roscado recto BSP TLM con junta

Acero Carbono



Artículo	ØD	Serie	R1	HEX 1	HEX 2	ØC	ØB	L	Presión trabajo (bar)
RAL 6 TLM R 1/8	6	L	1/8"BSP	14	14	2,5	2,5	31,5	500
RAL 8 TLM R 1/4	8	L	1/4"BSP	19	17	6	4	35,7	500
RAL 10 TLM R 1/4	10	L	1/4"BSP	19	19	6	6	36	500
RAL 10 TLM R 3/8	10	L	3/8"BSP	22	19	8	6	38,5	500
RAL 12 TLM R 1/4	12	L	1/4"BSP	19	22	6	8	39	400
RAL 12 TLM R 3/8	12	L	3/8"BSP	22	22	8	8	39,5	400
RAL 12 TLM R 1/2	12	L	1/2"BSP	27	22	11	8	42	400
RAL 15 TLM R 3/8	15	L	3/8"BSP	22	27	10	10	39,5	400
RAL 15 TLM R 1/2	15	L	1/2"BSP	27	27	10	10	42	400
RAL 18 TLM R 1/2	18	L	1/2"BSP	27	32	11	13	48	400
RAL 18 TLM R 3/4	18	L	3/4"BSP	32	32	16	13	50	400
RAL 22 TLM R 3/4	22	L	3/4"BSP	32	36	17	17	50	250
RAL 28 TLM R 1	28	L	1"BSP	41	41	22	22	55	250
RAL 35 TLM R 1 1/4	35	L	1"1/4BSP	50	50	28,5	28,5	61,5	250
RAL 42 TLM R 1 1/2	42	L	1"1/2 BSP	55	60	34	34	66,3	250
RAS 6 TLM R 1/4	6	S	1/4"BSP	19	17	6	6	37	630
RAS 8 TLM R 1/4	8	S	1/4"BSP	19	19	6	4	37,5	630
RAS 10 TLM R 3/8	10	S	3/8"BSP	22	22	8	6	40	630
RAS 12 TLM R 3/8	12	S	3/8"BSP	22	24	8	8	40,5	630
RAS 14 TLM R 1/2	14	S	1/2"BSP	27	27	11	8	43	630
RAS 16 TLM R 1/2	16	S	1/2"BSP	27	30	11	11	45,5	420
RAS 20 TLM R 3/4	20	S	3/4"BSP	32	36	16	14	52	420
RAS 25 TLM R 1	25	S	1"BSP	41	46	22	18	55,5	420
RAS 30 TLM R 1 1/4	30	S	1"1/4BSP	50	50	28,5	23	62	420
RAS 38 TLM R 1 1/2	38	S	1"1/2BSP	55	60	33	30	66	315