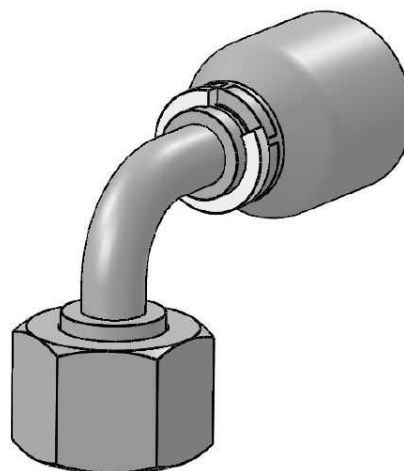
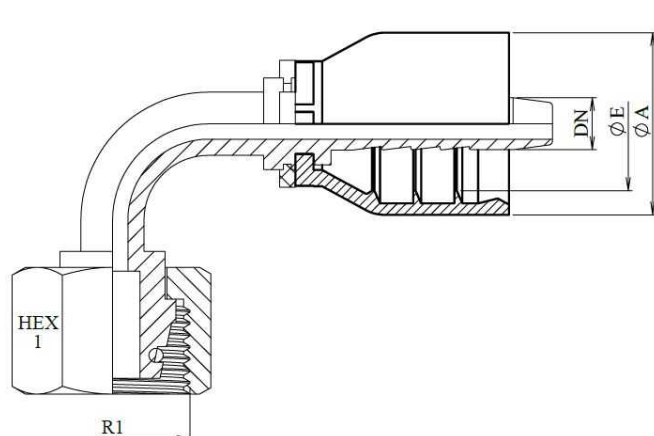


Femmina 90° compatta metrica sede 24°+O'ring

Acciaio al carbonio

1/2



Codice	DN	ØD1	Serie	R1	HEX 1	ØE	ØA	Dettagli
28305120604	1/4"	6	L	M12x1.5	14	16,9	23	24305120604+PFC221200400
28305140804	1/4"	8	L	M14x1.5	17	16,9	23	24305140804+PFC221200400
28305161004	1/4"	10	L	M16x1.5	19	16,9	23	24305161004+PFC221200400
28305161005	5/16"	10	L	M16x1.5	19	17,5	23.7	24305161005+PFC221200500
28305161006	3/8"	10	L	M16x1.5	19	20,7	28	24305161006+PFC221200600
28305181204	1/4"	12	L	M18x1.5				
28305181205	5/16"	12	L	M18x1.5	22	17,5	23.7	24305181205+PFC221200500
28305181206	3/8"	12	L	M18x1.5	22	20,7	28	24305181206+PFC221200600
28305221506	3/8"	15	L	M22x1.5	27	20,7	28	24305221506+PFC221200600
28305221508	1/2"	15	L	M22x1.5	27	24,8	34	24305221508+PFC221200800
28305261808	1/2"	18	L	M26x1.5				
28305261810	5/8"	18	L	M26x1.5	36	27	34	24305261810+PFC221201000
28305302210	5/8"	22	L	M30x2				
28305302212	3/4"	22	L	M30x2	36	32	40	24305302212+PFC221201200
28305362816	1"	28	L	M36x2	46	39	47	24305362816+PFC221201600
28305453520	1"1/4	35	L	M45x2	52	49,5	59.8	24305453520+PFC221202000
28305524224	1"1/2	42	L	M52x2	60	56	67.6	24305524224+PFC221202400
28305160804	1/4"	8	S	M16x1.5	19	16,9	23	24305160804+PFC221200400
28305181004	1/4"	10	S	M18x1.5	22	16,9	23	24305181004+PFC221200400
28305181005	5/16"	10	S	M18x1,5	22	17,5	23.7	24305181005+PFC221200500
28305181006	3/8"	10	S	M18x1.5	22	20,7	28	24305181006+PFC221200600
28305201204	1/4"	12	S	M20x1.5				
28305201205	5/16"	12	S	M20x1.5	24	17,5	23.7	24305201205+PFC221200500
28305201206	3/8"	12	S	M20x1.5	24	20,7	28	24305201206+PFC221200600
28305221406	3/8"	14	S	M22x1.5	27	20,7	28	24305221406+PFC221200600
28305241606	3/8"	16	S	M24x1.5				
28305241608	1/2"	16	S	M24x1.5	30	24,8	34	24305241608+PFC221200800

Femmina 90° compatta metrica sede 24°+O'ring

Acciaio al carbonio

2/2

Codice	DN	ØD1	Serie	R1	HEX 1	ØE	ØA	Dettagli
28305302010	5/8"	20	S	M30x2	36	27	34	24305302010+PFC221201000
28305302012	3/4"	20	S	M30x2	36	32	40	24305302012+PFC221201200
28305362512	3/4"	25	S	M36x2	46	32	40	24305362512+PFC221201200
28305362516	1"	25	S	M36x2	46	39	47	24305362516+PFC221201600
28305423016	1"	30	S	M42x2	50	39	47	24305423016+PFC221201600
28305523820	1"1/4	38	S	M52x2	60	49,5	59.8	24305523820+PFC221202000