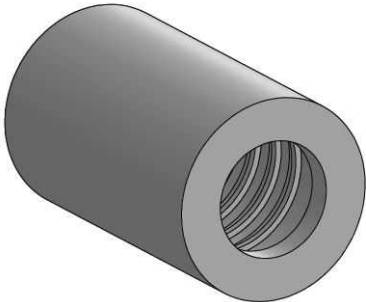
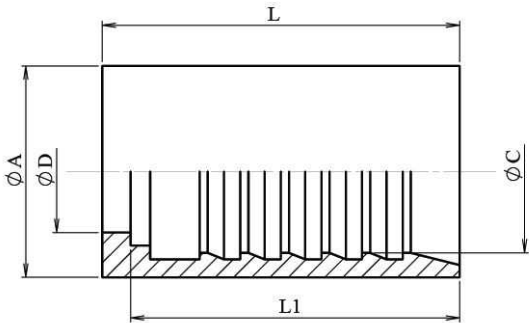


Ferrules for thermoplastic hose 700 bar MT700 type

Mild Steel 1.0737 (EN 10.277-3)



Part nº	DN	Working Pressure (bar)	L	L1	ØA	ØC	ØD
710120400	1/4"	700	38,1	35,1	20	14,6	11,9
710120600	3/8"	700	44	40,5	26	20	15