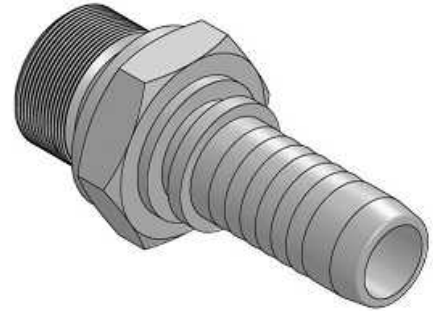
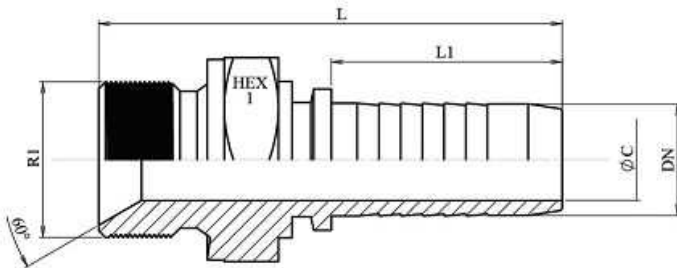


BSP Male parallel 60° cone

Mild Steel 1.0737 (or equivalent)

1/1

Part n°	DN	R1	L	L1	HEX 1	ØC
241120203	3/16"	1/8" BSP	42,5	24	14	3
241120204	1/4"	1/8" BSP	47	28	14	4
241120402	1/8"	1/4" BSP	45,5	22	19	2
241120403	3/16"	1/4" BSP	47,5	24	19	3
241120404	1/4"	1/4" BSP	52	28	19	4
241120406	3/8"	1/4" BSP	54	29,5	19	7
241120604	1/4"	3/8" BSP	55,5	28	22	4
241120605	5/16"	3/8" BSP	55,8	28	22	5,5
241120606	3/8"	3/8" BSP	57,5	29,5	22	7
241120608	1/2"	3/8" BSP	59	30,5	22	9,5
241120804	1/4"	1/2" BSP	61,5	28	27	4
241120806	3/8"	1/2" BSP	60,5	29,5	27	7
241120808	1/2"	1/2" BSP	62	30,5	27	9,5
241121008	1/2"	5/8" BSP	62	30,5	27	9,5
241121010	5/8"	5/8" BSP	68,3	34	30	12
241121208	1/2"	3/4" BSP	64,5	30,5	32	9,5
241121210	5/8"	3/4" BSP	68,3	34	32	12
241121212	3/4"	3/4" BSP	74,5	39	32	15
241121612	3/4"	1" BSP	79,5	39	41	15
241121616	1"	1" BSP	87,5	47	41	19
241122016	1"	1"1/4 BSP	89	47	50	19
241122020	1"1/4	1"1/4 BSP	98	54,5	50	26
241122424	1"1/2	1"1/2 BSP	104	58	55	32
241123232	2"	2" BSP	124	72	70	44